



WASTED PARTS INV#

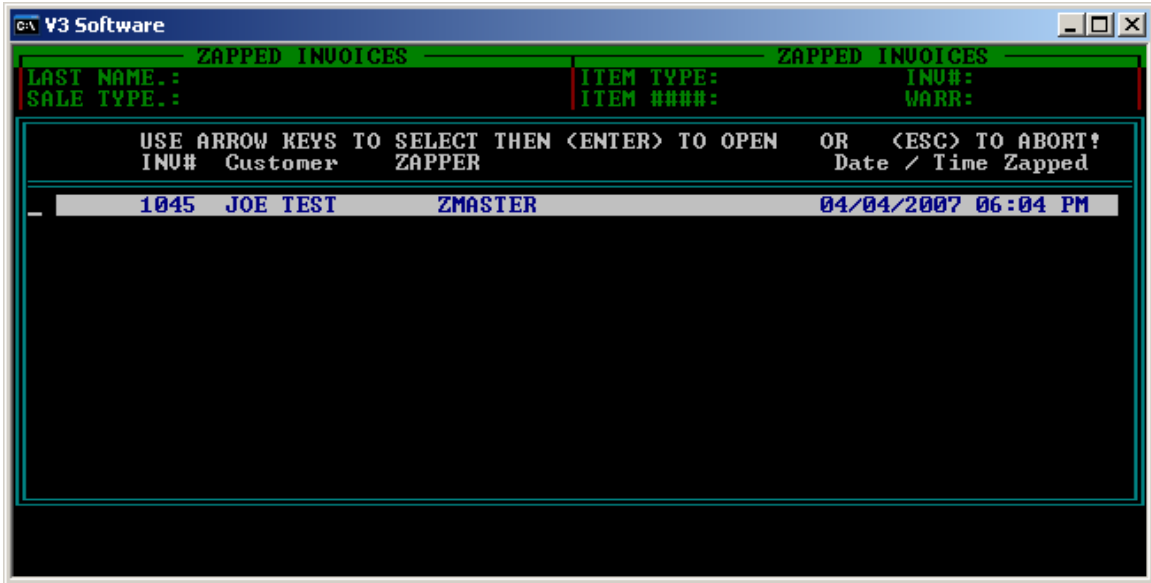
PARTS INV#'S are created in sequence. Any **INVOICE** deleted or zapped from the system without being closed to **HISTORY** will be logged into the **WASTED PARTS INV#** module. This will allow for audit control.



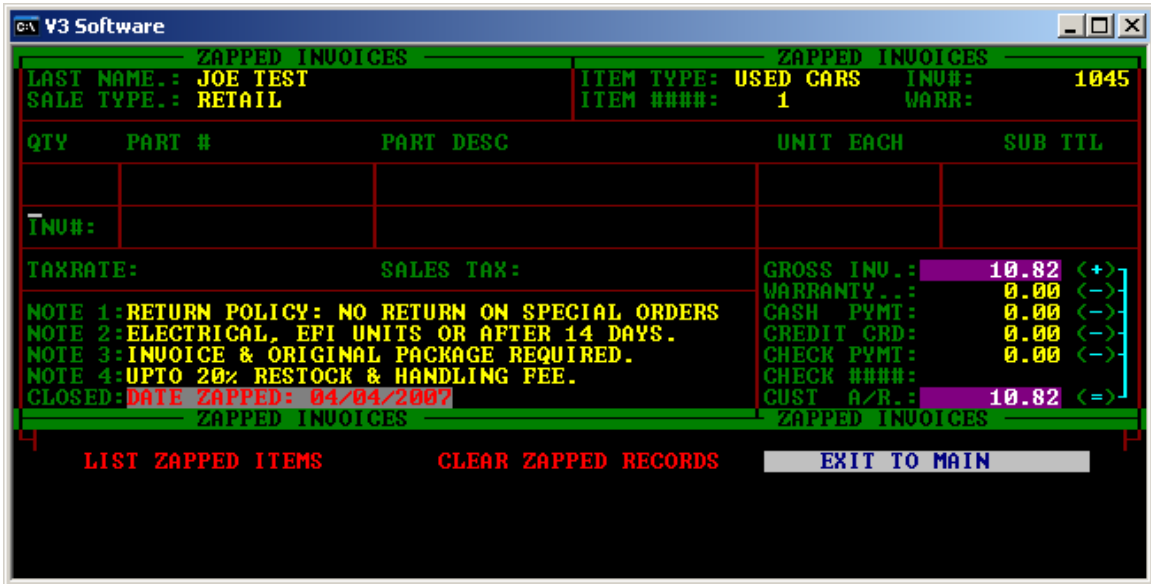
To view highlight and press enter on **WASTED PARTS INV#**.



Highlight and press enter on **LIST ZAPPED ITEMS**.



The **PARTS INV#** will be listed in sequence. Highlight the target **INVOICE** and press enter to view.



Note that the **INVOICE** is time stamped with the date the user deleted the **INVOICE**.

EXIT TO MAIN.

V3 software notes:
