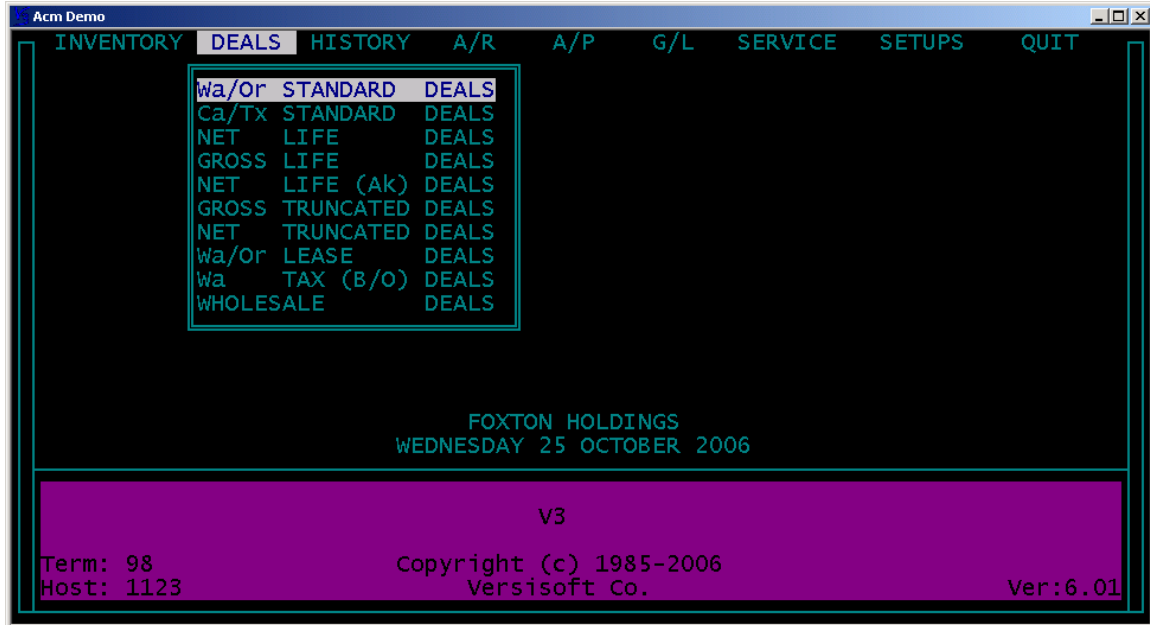


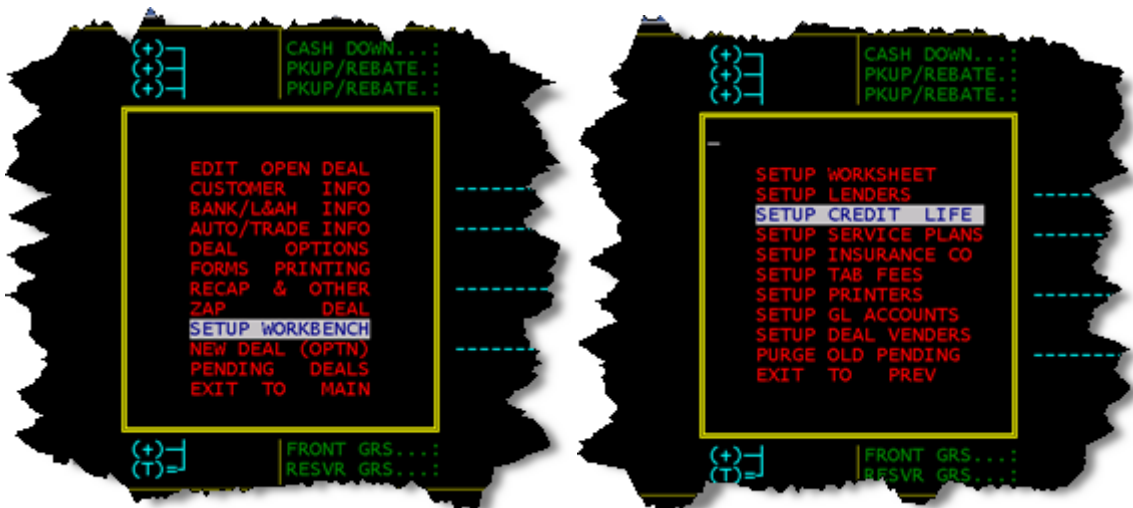


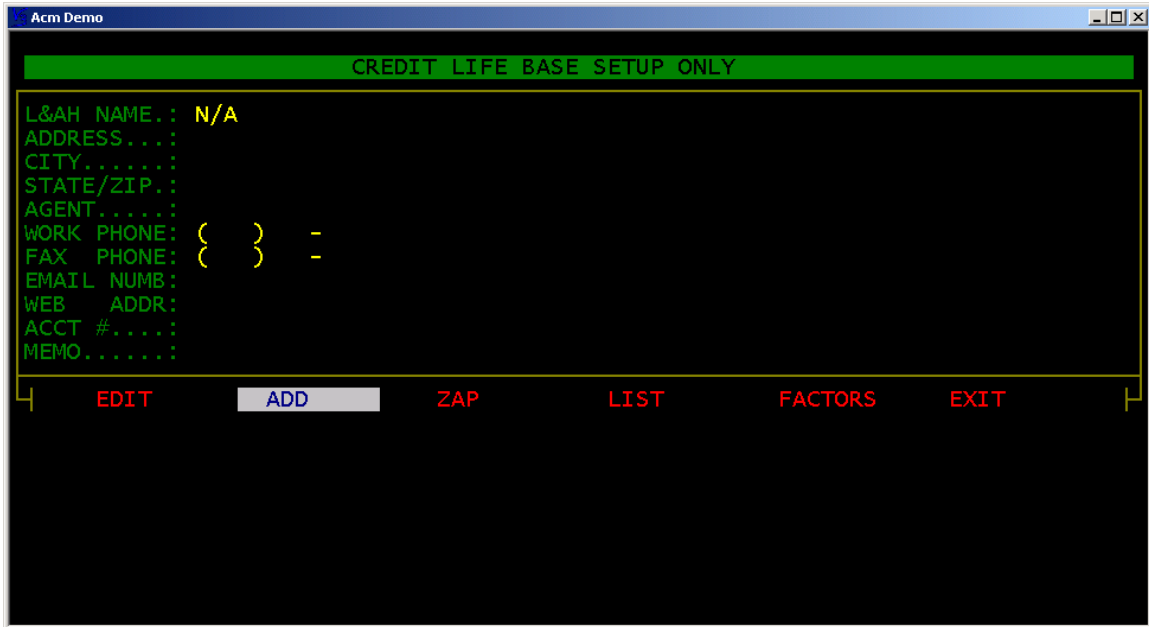
## SETUP CREDIT LIFE

The **CREDIT LIFE** module holds all the **CREDIT LIFE** companies' information including factors. Setting up the **CREDIT LIFE** prior to working pending deals will be most helpful and time saving. If you do not sell Credit Life skip **SETUP CREDIT LIFE**.

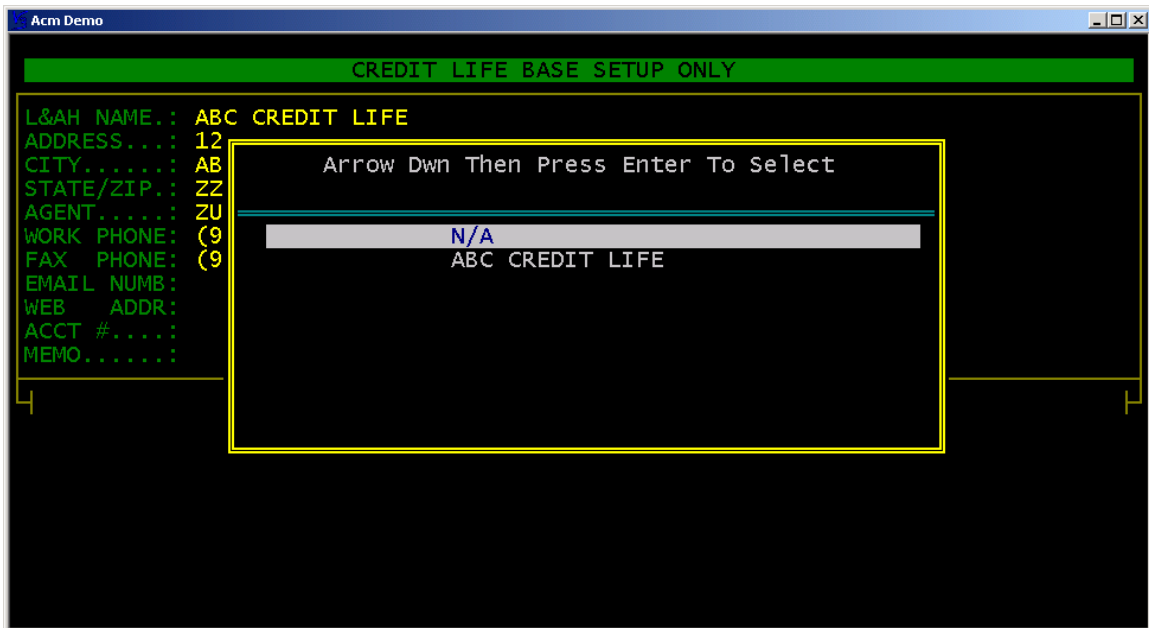


To access the **SETUP CREDIT LIFE** module go to **DEALS**, **SETUP WORKBENCH**, and **SETUP CREDIT LIFE**.

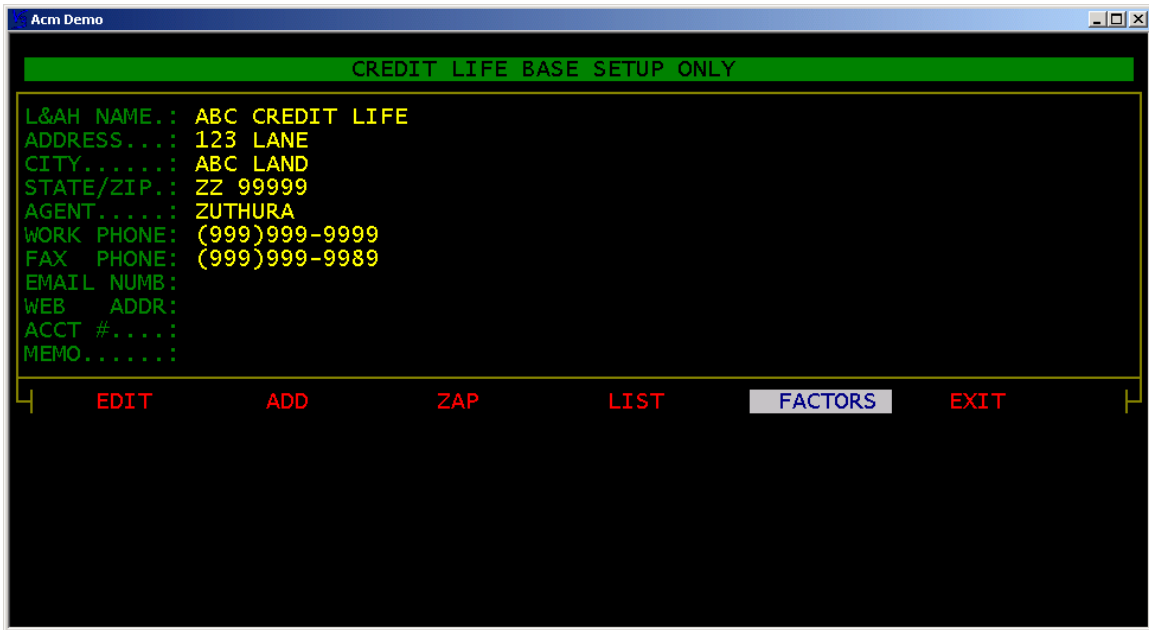




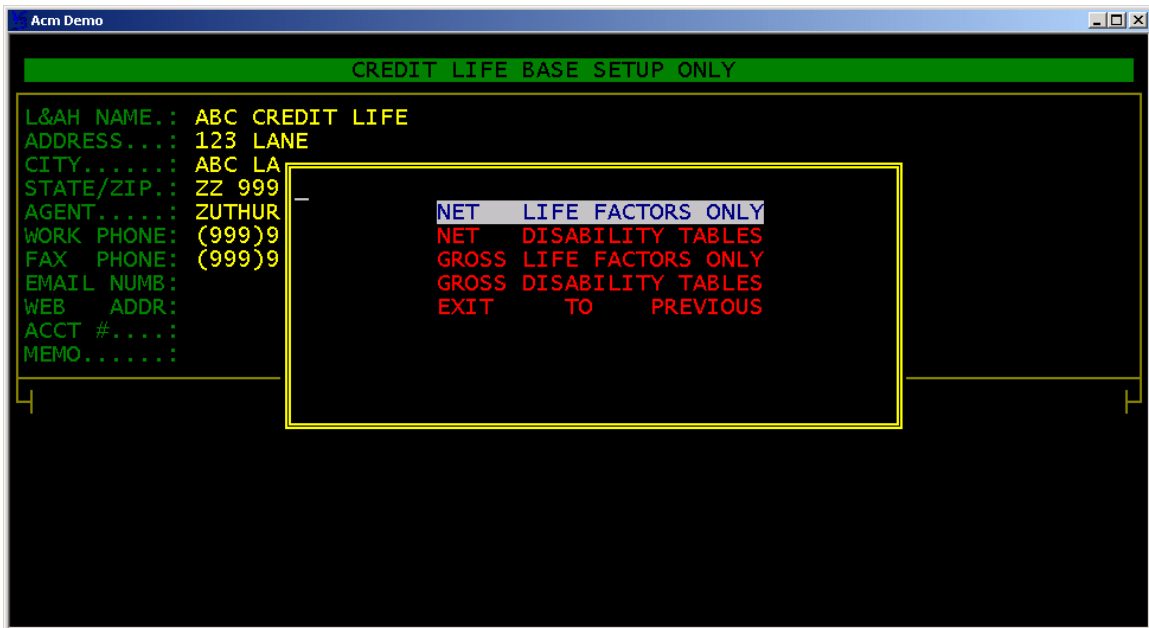
To add a CREDIT LIFE company go to ADD. Complete the fields as designated. Unlimited CREDIT LIFE companies may be added.



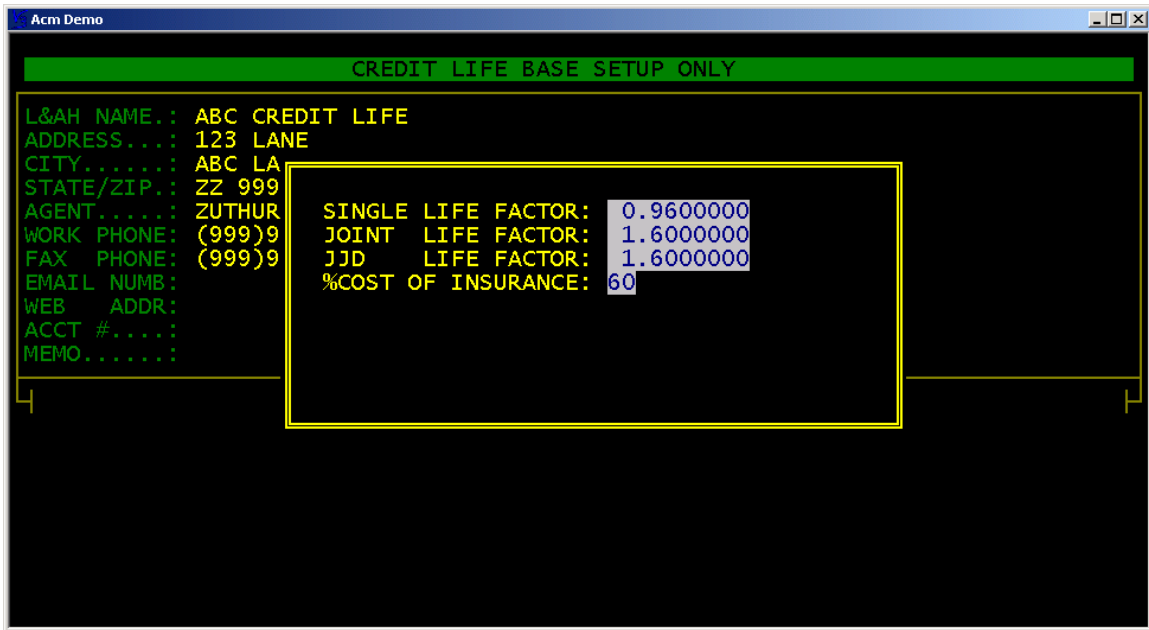
LIST to call up list of current CREDIT LIFE companies. Highlight the CREDIT LIFE Company and press enter to select to bring CREDIT LIFE information onto the screen.



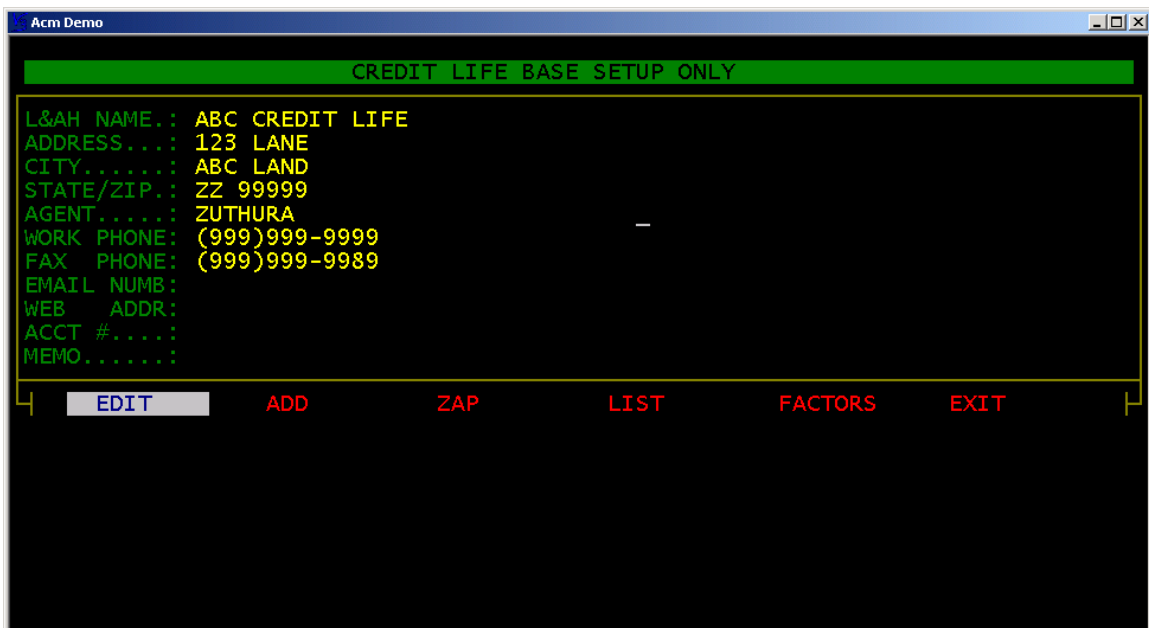
To enter the factors highlight FACTORS and press enter.



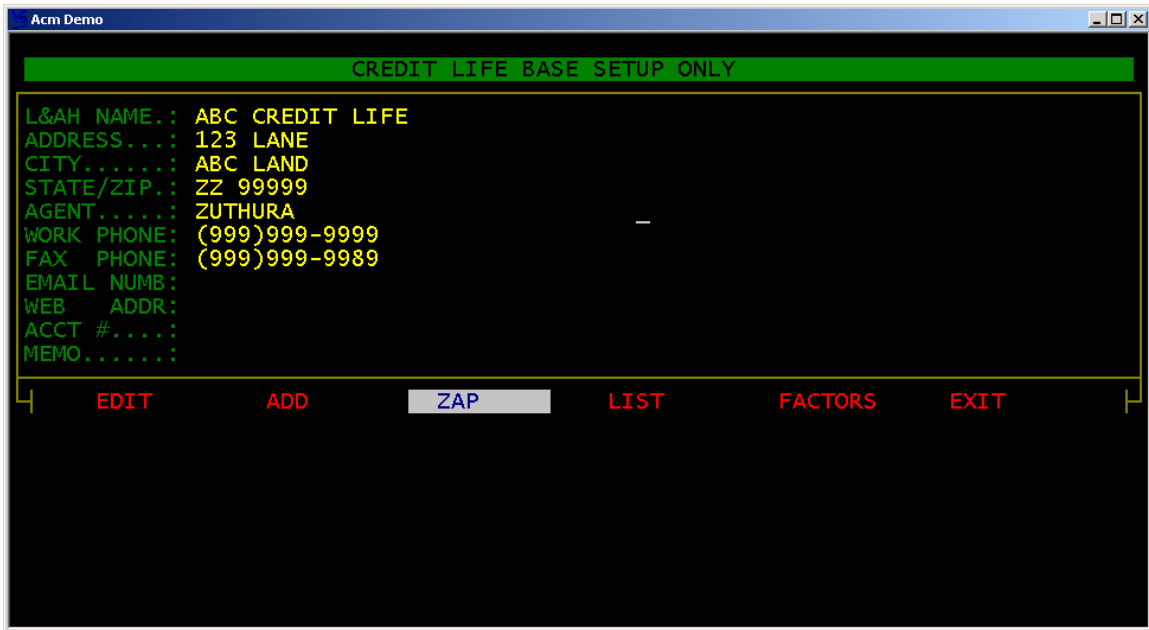
Highlight the FACTOR table and press enter.



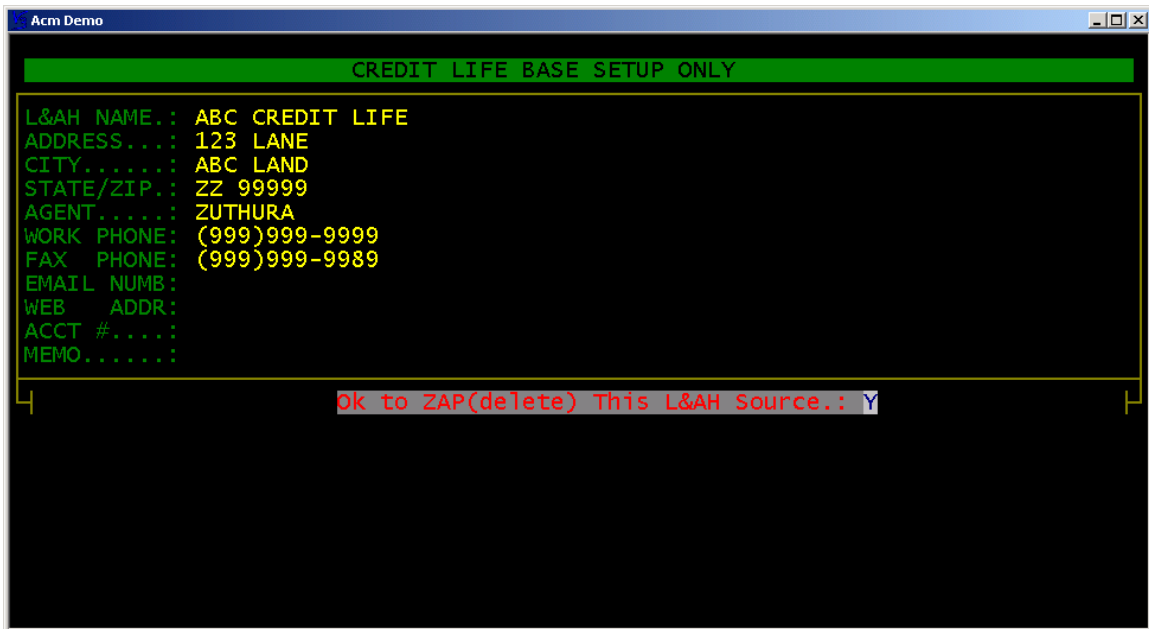
Enter FACTORS for each table.



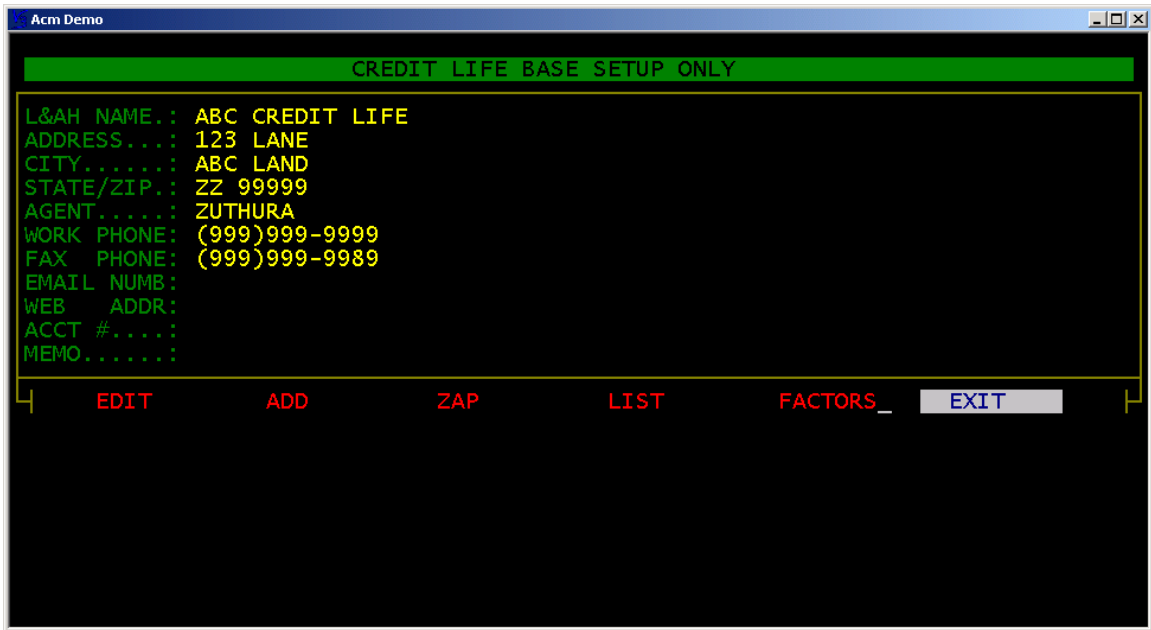
To edit a current CREDIT LIFE company highlight EDIT and press enter.



To delete a current CREDIT LIFE company call up the CREDIT LIFE company onto the screen and highlight ZAP and press enter.



Change the “ok to ZAP (delete) This L&AH Source.:" to “Y” and press enter. Once you ZAP a CREDIT LIFE company the information is deleted permanently.



To exit SETUP CREDIT LIFE module highlight EXIT and press enter.

V3 software notes:

---

---

---

---

---

---