



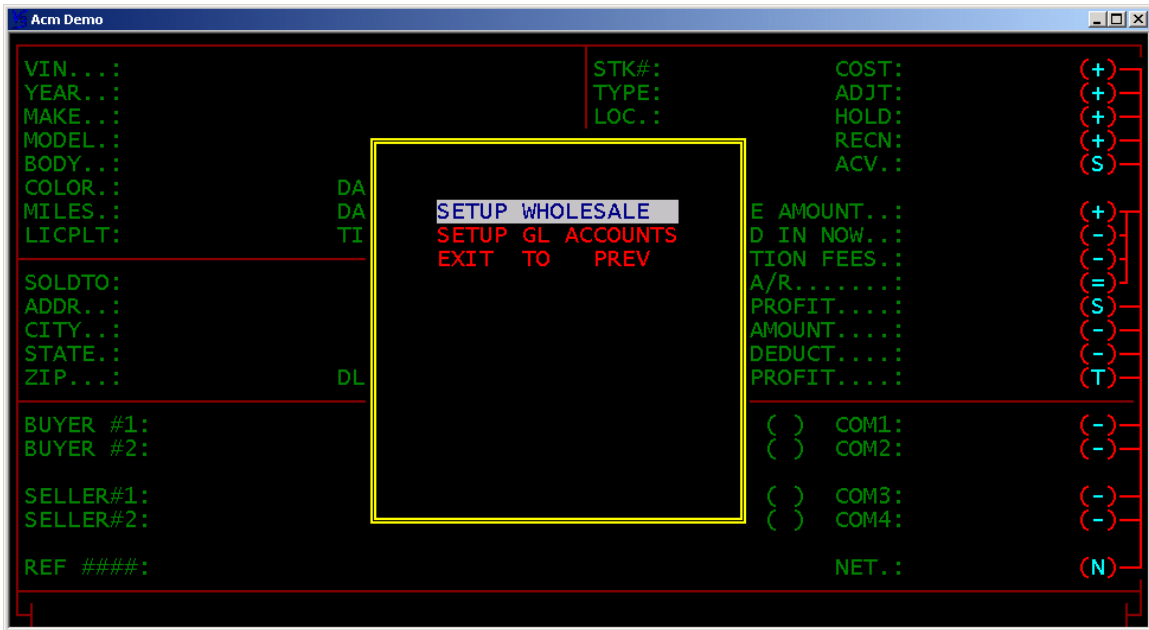
SETUP WHOLESALE WORKBENCH

The **WHOLESALE WORKBENCH** module holds the default for wholesale pack and the **WHOLESALE WORKBENCH GL** accounts. Setting up the **WHOLESALE WORKBENCH** prior to working pending deals will be most helpful and time saving. To set up **WHOLESALE WORKBENCH** information go to **DEALS** from the **MAIN MENU**.

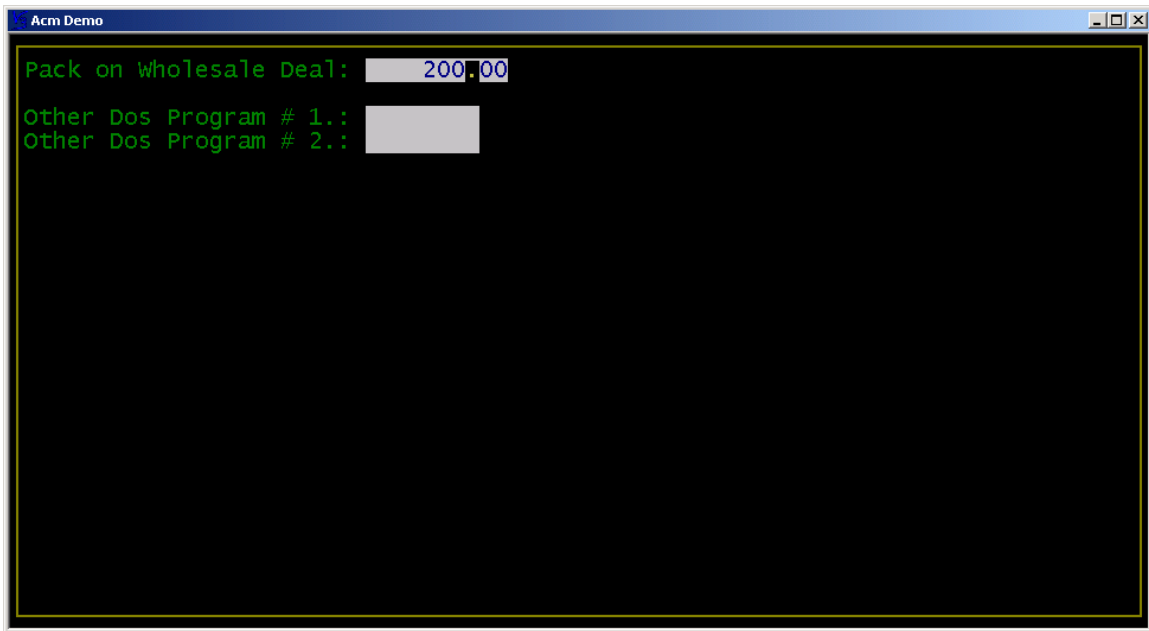


To access the **SETUP WHOLESALE WORKBENCH** module go to **WHOLESALE DEALS, MORE OPTIONS, and SETUP DEFAULTS**.

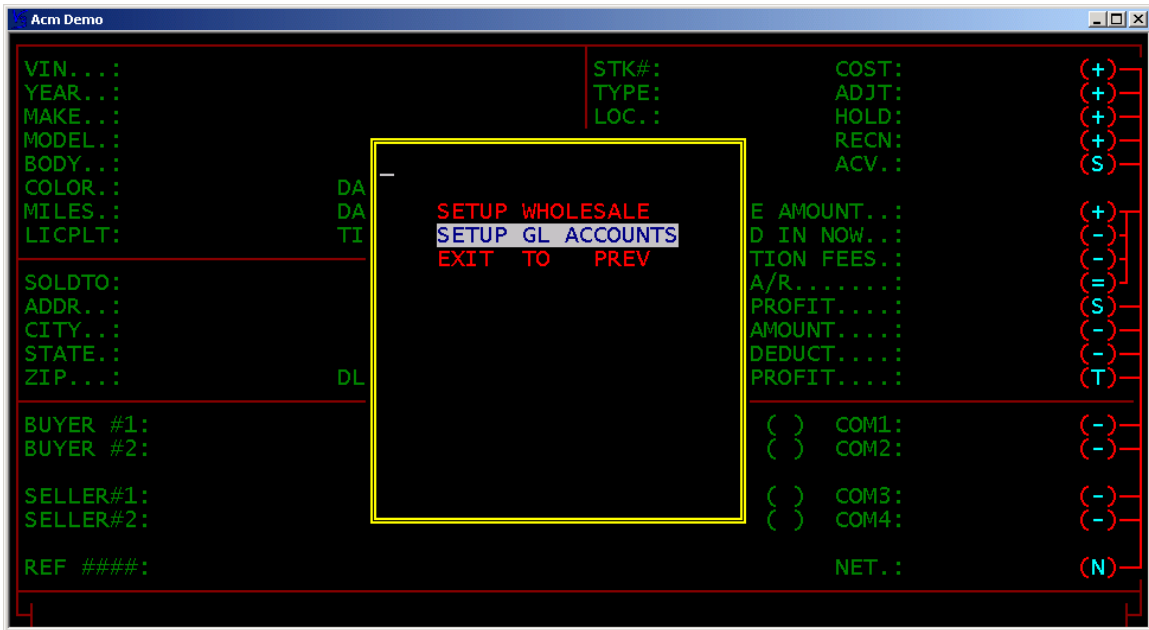




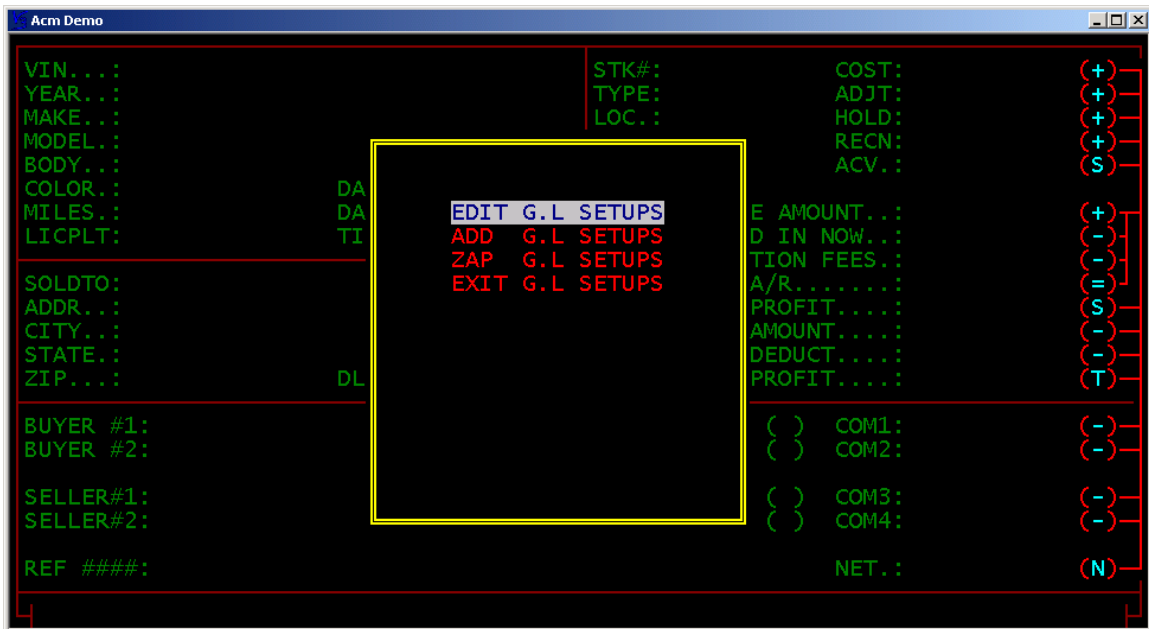
To **SETUP WHOLESALE WORKBENCH**, which holds pack default, highlight and press enter on **SETUP WHOLESALE**.



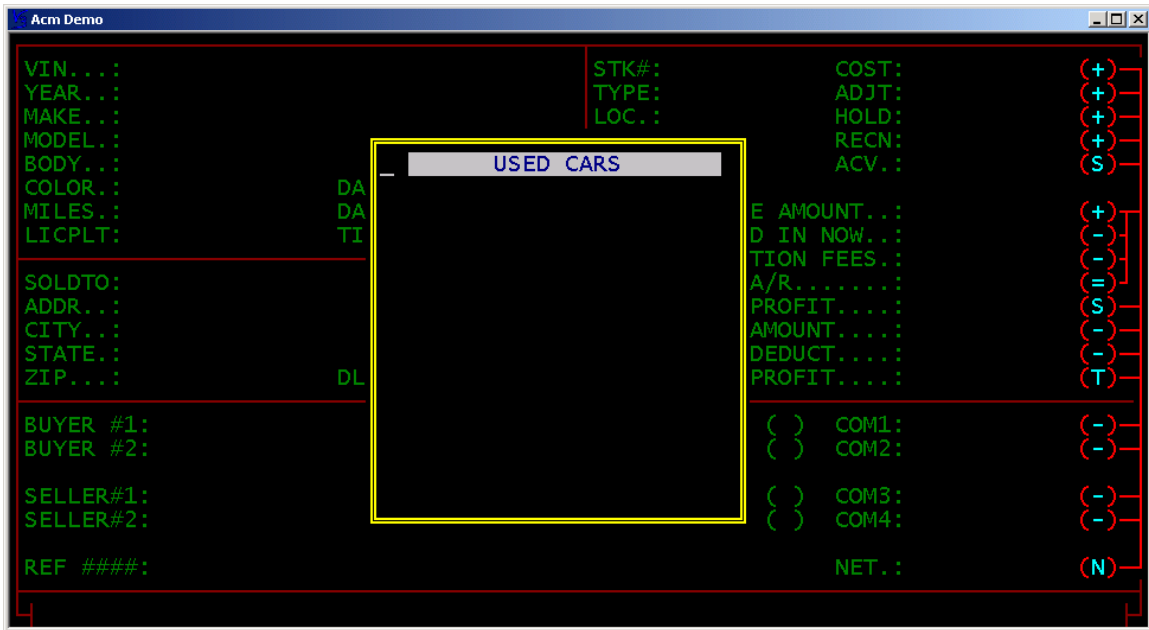
Enter wholesale pack default and enter through.



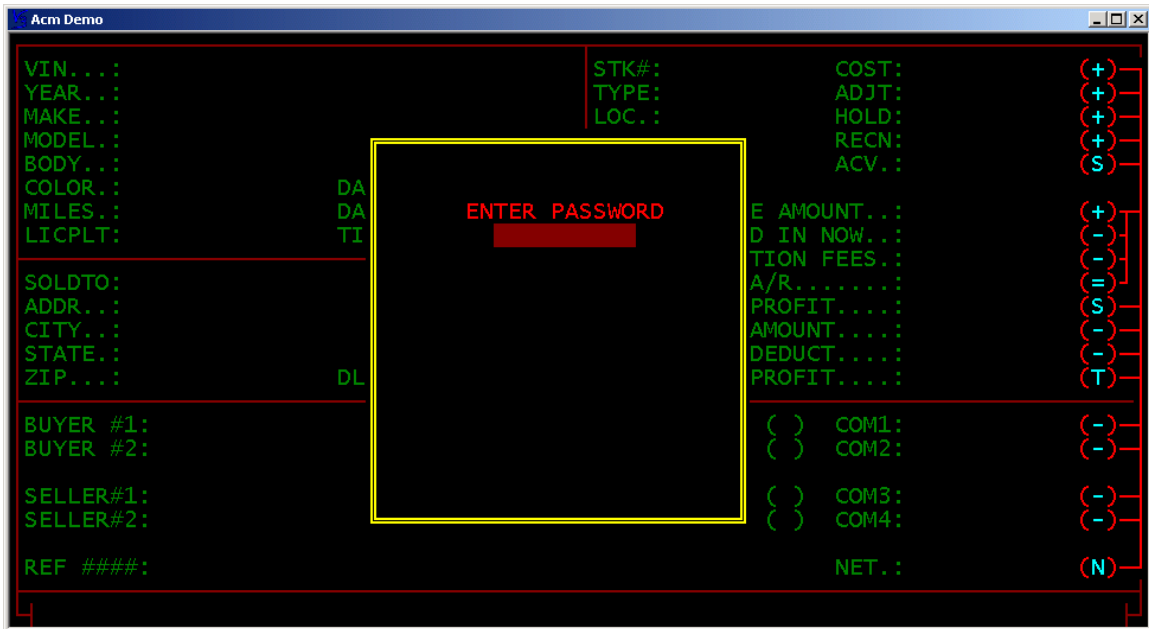
To **SETUP GL ACCOUNT** defaults for the **WHOLESALE WORKBENCH** highlight and press enter.



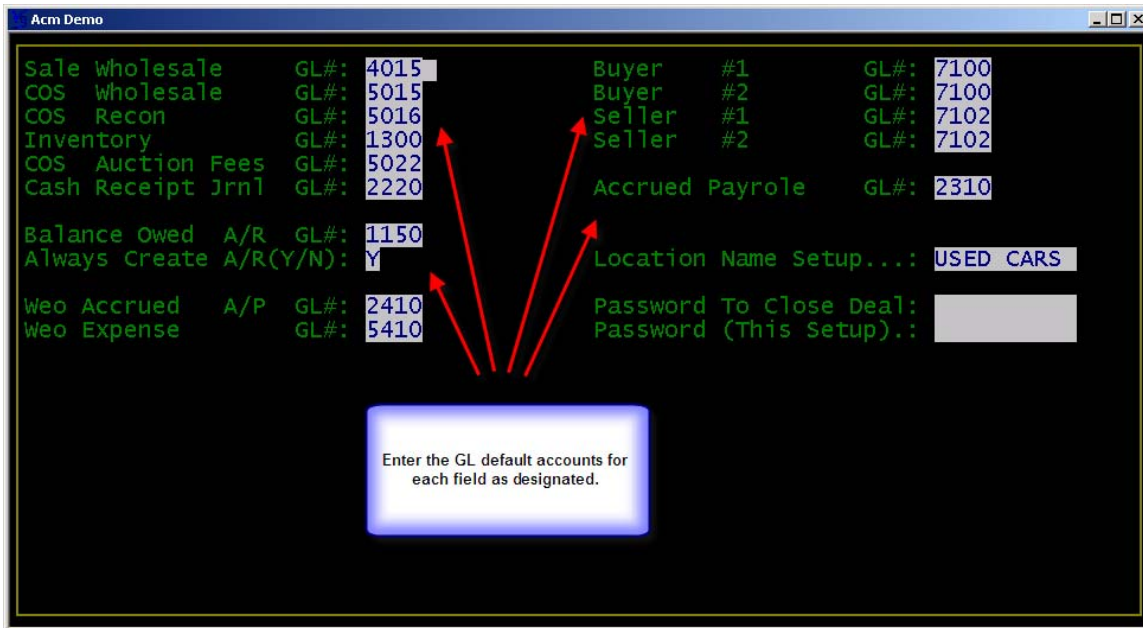
To **EDIT GL SETUPS** highlight and press enter.



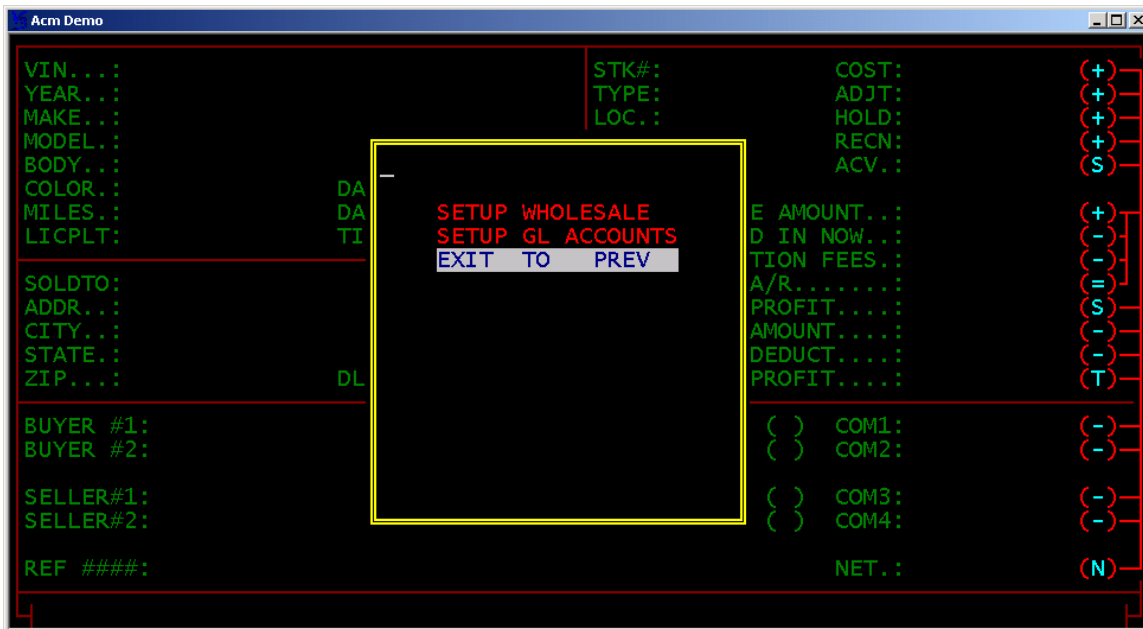
Highlight and press enter on the **LOCATION** to be setup. If the **LOCATION** of interest is not listed select the first **LOCATION** and press enter. The **LOCATION** may be edited in the setup screen.



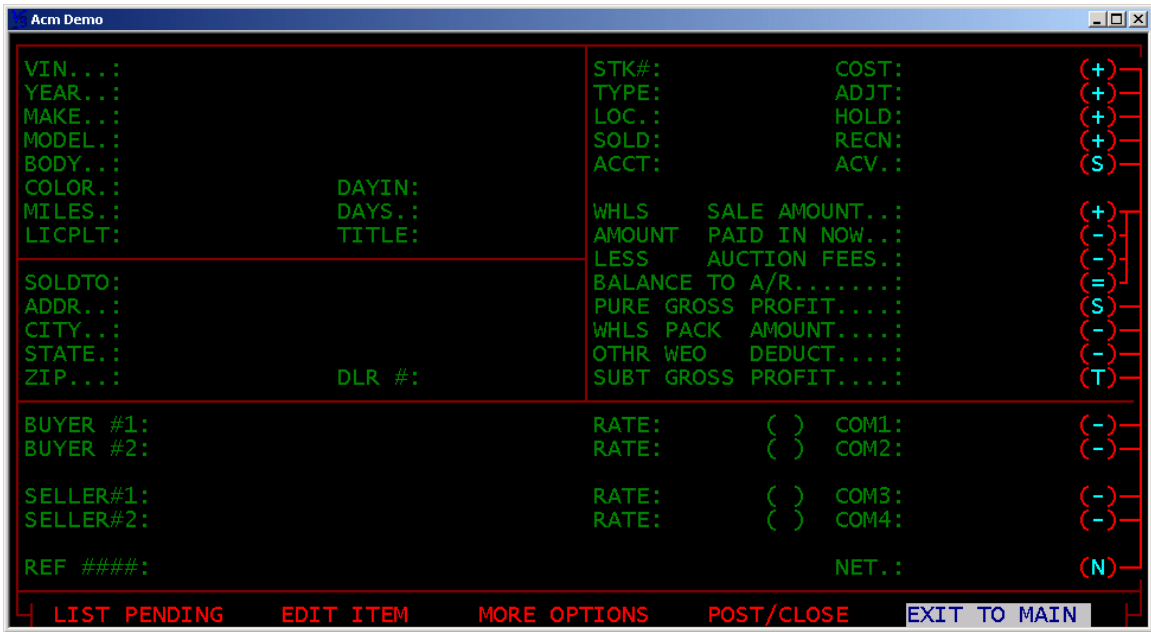
This screen may be password protected. Enter through password field if passwords have not yet been setup.



Be sure to setup **CHART OF ACCOUNTS** prior to setting up the accounts in the **WHOLESALE** module.



EXIT TO PREV to return to previous screen.



To exit the **SETUP WHOLESALE WORKBENCH** module highlight **EXIT TO MAIN** and press enter.

V3 software notes:
